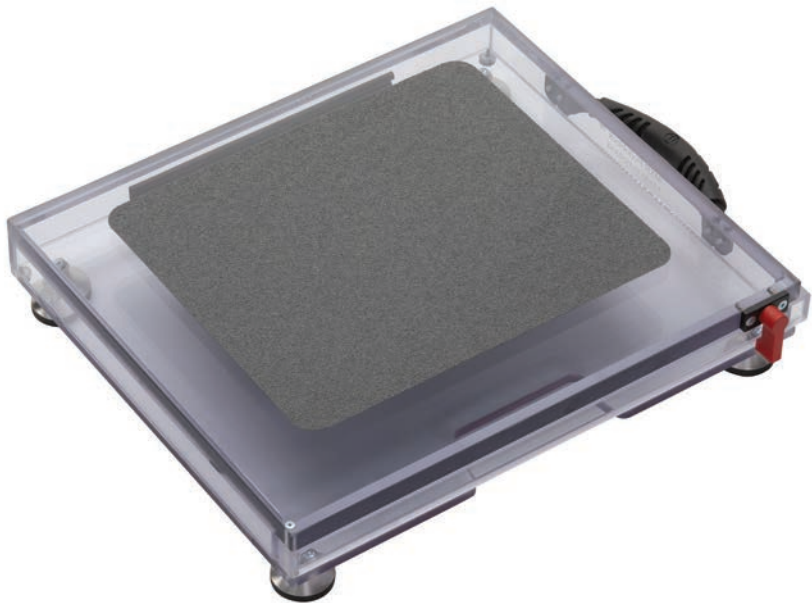




# Skylinebox

User Manual



 **PODOBLOCK**

[www.podoblock.com](http://www.podoblock.com)

## After sales correspondence

All correspondence relating to the after sales service of Podoblock B.V. to be addressed to:

### **NL Customers**

Podoblock B.V.  
Verlengde Nijverheidsweg 10  
9482 WT Tynaarlo  
The Netherlands  
Tel: +31 50 8200 257  
Fax: +31 50 8200 212

### **Overseas Customers**

Contact your local distributor. In case of doubt please contact Podoblock B.V.

For further information visit [www.podoblock.com](http://www.podoblock.com)

### **Trade marks**

Podoblock™ is a trademark of Podoblock B.V.

# 1 Preliminary information

## Warning

Please read this preliminary information carefully and note ALL warnings, cautions and safety notes in these instructions for use before using the Skylinebox. Keep these Instructions For Use (IFU) close at hand at all times for reference. The Skylinebox must only be used as detailed within this "handbook". Failure to do so could result in injury to patients or users or (also) damage to the equipment. MXR does not take any responsibility for the improper handling of the Skylinebox.

- 1.1 The instruction for use should be readily accessible for reference at all times and be referred to for details of the Skylinebox.
- 1.2 Sections marked with the symbol provide guidance to possible actions that could lead to injury of the patient or user, or damage the Skylinebox. Ensure all warnings in the handbook are strictly complied with.
- 1.3 Section 3 **Operation** provides information detailing how to use the different types of Skylinebox. It is strongly recommended that the user has read it and is familiar with section 3 before using the Skylinebox.
- 1.4 The following information is used on the Skylinebox label:



1.4.1 The Skylinebox is available for every type X-ray system. This includes all Analogue, Digital CR systems and Digital DR Flat panels. The type indication is mentioned on the label, this tells you what type and size Skylinebox is used.



Never use an X-ray Cassette or Flat panel which has not the exact measurements as described on the Skylinebox type indication.

1.4.2 Serial number: this is a unique number of your Skylinebox and contains all detailed information about this specific product. Always mention this serial number when communicating with your supplier.

1.4.3 The Skylinebox should only be used with the following recommendations:

- Temperature range: +10° C to +40° C (50° to 104° F)
- Weight Limit: 1040 kg / 2293 lb
- Stiffness top plate: 146 kg/mm / 8200 lb/inch
- Humidity range: 30% to 75% RH non-condensing



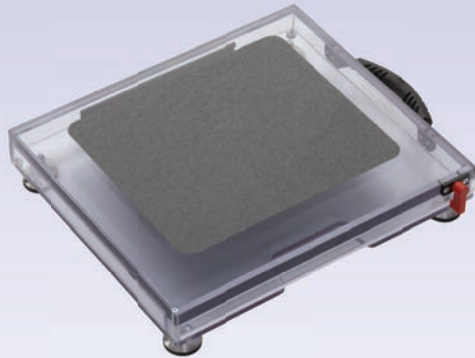
The Skylinebox is only for use in the recommended ranges and therefore the warranty does not cover damage as a result of accident, abuse or high impact.

## 2 Description

The Skylinebox is available in different sizes, depending on the X-ray system used, the description for each size of the Skylinebox is equal.

Note that your model Skylinebox can be either with or without a door. Always follow the user manual, if you have the model without a door, please skip this part. Never use an X-ray cassette or flat panel that does not have the exact measurements as described on the Skyline type indication.

- 2.1 Skylinebox: made of polycarbonate for skyline exams of the foot. Can be used with 0° or 5° angle. The Skylinebox is supplied without any separate or loose parts.



- 2.2 The Skylinebox consists of the following parts:
- Polycarbonate tunnel
  - Polycarbonate door (some models without)
  - 4 Rubber feet
  - 3M Anti-slip on top surface
  - Grip handle on Skylinebox for flat panels

The IFU describes the operation of all types of Skylinebox.

### 3 Operation



Check for any wear-and-tear or damage that could compromise safety before use of your Skylinebox.

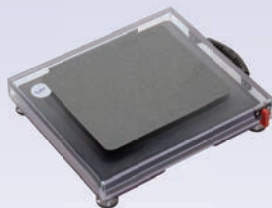
For using the Skylinebox please follow point 3.1 to 3.5

#### 3.1 Unpacking and first impression

The Skylinebox is supplied in a cardboard box. If the cardboard box is damaged during transport and expected to have influence on the quality of the product inside, please contact your supplier immediately.

When unpacking the Skylinebox, do not use any sharp tools or materials. This could damage your Skylinebox.

When completely unpacked, first check on visible damage and check if all parts have been provided, as mentioned in section 2.2



#### 3.2 Placing the Skylinebox

Before positioning the Skylinebox, make sure the ground surface is clean and dry. The Skylinebox must be placed on a level ground surface.



Make sure that the Skylinebox is placed under the conditions mentioned, otherwise it may cause injuries to material and/or users.

### 3.3 Placing the X-ray Cassette or Flat panel

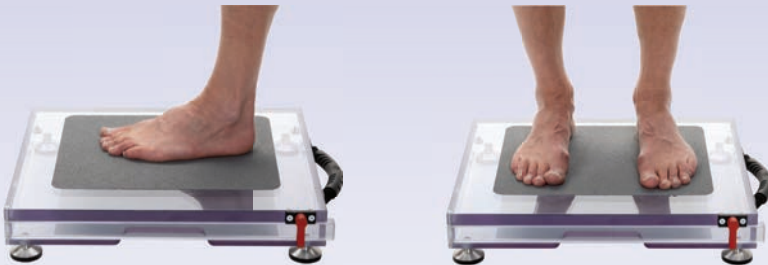
Before inserting the X-ray cassette or flat panel, fully open the door, then slide the cassette into the box. This should work easily, otherwise please check if the appropriate cassette or flat panel is used.



*Close the door and verify that the door is closed completely.*

### 3.4 Positioning the patient for Skyline exams with Skylinebox

Before positioning the patient make sure both the ground surface the Skylinebox is placed on and the Skylinebox itself are clean and dry. Never position the patient without the X-ray cassette or flat panel inside the Skylinebox and with the door closed.



### 3.5 Store the Skylinebox

After the examinations always let the patient step down first. Open the door completely, remove your X-ray cassette or flat panel and store the Skyline box in an appropriate place to avoid stumbling over it. See chapter 4 for cleaning and service.

## 4 Cleaning and Service

4.1 The Skylinebox does not require servicing. However, a regular 4 monthly check for any wear-and-tear or physical damage that could impair its functionality is recommended.

This service check should include the following:

- Check the surface on all sides
- Check if the door is opening and closing correctly
- Check the 3M Anti-slip
- Check the rubber feet
- Check the grip handle (flat panel Skylinebox)
- Check for damages on the entire device
- If any damage is found do not use the device and contact your local distributor

4.2 Cleaning with a disinfectant is necessary after every use. If the Skylinebox is not disinfected properly it may cause athlete's foot.